



A Publication of the Railroad Model and Historical Society of Southeastern Ohio, Inc.

PO Box 1, Albany, Ohio, 45710

October 2013

Upcoming Events:

October 5, 2013

The Laurels of Athens
10am - 4pm
Athens, Ohio
Admission: FREE
Operating Layouts

October 8, 2013

Club Meeting
7:00pm
Kenny Shanks' Garage
7 4th Street, Jacksonville

October 19-20, 2013

NMRA Cincinnati Train Show
West Chester, Ohio
Admission: \$7
Operating Layouts, Displays,
Locomotive Tune-ups, How to
Sessions, Vendors

October 26-27, 2013

The Wabash Cannonball
Ft. Wayne-Lafayette, Indiana
Admission: \$89-\$299+
Ride behind the historic steam
locomotive no. 765

November 2, 2013

18th Annual MOVNRC Train
Show/Sale
Admission: \$4
WV University - Parkersburg, WV
Vendors, Model Trains,
Memorabilia, Operating Layouts

November 2-3, 2013

NMRA Dayton Train Show
Dayton, Ohio
Admission: \$6
Operating Layouts, How-to
Clinics, Vendors, Hourly Door
Prizes

December 14-15, 2013

Railfair 2013
Sat. 9am - 9pm
Sun. 10am - 5pm
The Market on State,
Athens, Ohio
Admission: FREE
Operating Layouts, Raffle

What to go in that corner.....

By: James Patterson

"What should we do in that corner?" was the question asked at the club, involving a spot in the southwest side of the layout. We had recently put up two large, very detailed backdrops in that area, which improved the look of the previously bare and pitted concrete wall. However there was a bare patch of plywood behind the two mainlines as they curved around the yard and up the hill. This section had always played host to those ceramic collectible buildings that got sold at collectibles shops for mere dollars, these were always missed as a rise in the scenery made them all but invisible to people looking from the aisle, the design of the layout also meant the closest people could get was about 12 feet, a bit far to see small details. Nobody ever thought much of doing anything back there, it was impossible to reach from the service aisle and the ladder made things a bit interesting.

Then somebody posed the above question one night while admiring the backdrops, "that bare corner kinda destroys the effect of the backdrops". So I decided to accept the challenge and do something with that corner. I found an N scale station wagon at the hobby shop that had its roof racks full of camping gear, and I knew what I was going to do with that corner, or so I thought. I took some insulation foam the club had and cut it to form a hill in the back corner, then I placed the station wagon and a little tent I made on top of the hill. The effect was pretty

cool, the N scale stuff made that corner seem just that much farther away. However, once again, at 12 feet out, the scenery was impossible to see from the public aisle. Back to the drawing board, and the project was put on hold for the time being.

The next trip to the hobby shop I stumbled upon something I had missed before, a Visemann HO Wind Turbine (for wind farms). I bought it and assembled it at home, with the initial intention of using it on my NMRA modules. The tower stood a whopping two feet tall, had blades that actually turned, and a red beacon on top, however because of its immense height, it would not fit on my NMRA modules, as they flip on one another for transit, and the top module would not clear the lower with the turbine, and vice-versa. The next week or so I contemplated on what I was going to do with that turbine, until I looked at that back corner at the club again. The turbine was perfect for that spot, it stood almost as tall as the backdrops, and the effect it made from a distance really made the turbine stand out. People at the front of the club even made the comment on how it was visible from the other side of the layout.

At the next show, the turbine bought people down an aisle that normally stayed pretty empty. Several photos were taken. What a way to liven up a corner.

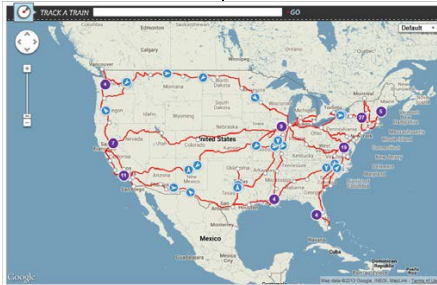
Railroad News From Around The Country

Amtrak Teams with Google to Create Interactive Train Locator Map

Amtrak is introducing an innovative way to see where trains are and when they are expected to arrive, including information on stations nationwide, all through a new interactive train locator map built on the easy-to-use, familiar Google Maps interface.

The new train location tracking system, available at Amtrak.com, provides near real-time train status of more than 300 daily trains, estimates of arrival times and station information – all in the context of the Amtrak national system map. Checking on train status is the second most popular action on Amtrak.com, just after purchasing tickets.

In addition to helping passengers plan travel, this new travel resource is an excellent tool for those planning the arrival or departure of family and friends.



Users can search for information by train number or name, city name and station name or code.

“This tool creates a new platform for sharing information with our customers, and Amtrak will continue to add helpful layers onto this map such as local travel and tourist information to provide passengers a one-stop location for all their travel needs,” said Amtrak Chief Marketing and Sales Officer Matt Hardison.

“This map joins several recent technology-related offerings that have improved the customer experience and changed how

Amtrak does business, ultimately changing and enhancing the way customers travel with us.”

The information provided in the map is aggregated data collected from GPS units on each operating train and other automated systems. The data is transmitted to Google’s cloud, and then transferred to the map.

The new tracking system joins

several recent technology advancements at Amtrak including expanded and improved Wi-Fi, eTicketing and mobile phone apps.

In addition to working with Google to advance new systems for our customers, Amtrak has partnered with other major industry-leading brands, such as Apple and AT&T, to improve the amenities and services provided to passengers. (Amtrak.com News Release)

Amtrak to Continue Operating in the Event of a Short-Term Federal Government Shutdown

In light of the uncertainty in the federal budgeting process, Amtrak issued the following statement today:

“Amtrak will continue normal operation of its national intercity and high-speed passenger rail network in the event of a short-term federal government shutdown. Passengers planning to travel on Amtrak trains in the Northeast Corridor and across the country in the coming days and weeks can be assured that Amtrak will remain open for business.” (Amtrak.com News Release)

Our Mission

To Teach...

Those who want to know more.

To Educate...

Those who want to learn the history.

To Promote...

The hobby with enthusiasm.

And to share and enjoy the pleasure of all that is Railroading.



Like us on Facebook!

Find us on the web!

www.ironheadsofseo.org

Have stories, articles, or pictures?

Want to see them in a future edition of the Ironhead Gazette?

Send them to us!

Email: jdawg9292@yahoo.com

Mail: PO Box 1

Albany, Ohio 45710

Your contributions keep the Ironhead Gazette moving!

All Aboard!